



4x4 System

Downspouts and Attachments – 4" H x 4" W

An array of 4x4 downspout options are available to feed fiber from overhead straight sections into fiber optic equipment below.

Ordering Information

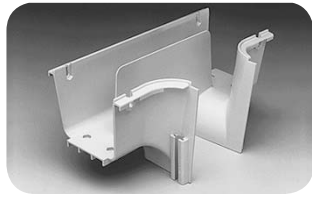
Description	Number of Junctions	Yellow System Catalog Number	Orange System Catalog Number
4x4 downspouts			
Downspout	2*	FGS-MDSP-A	FGSO-MDSP-A
Cover for 4x4 downspout	–	FGS-MCDS-AB	FGSO-MCDS-AB
Extended downspout	–	FGS-MDSP-EX-A	FGSO-MDSP-EX-A
Cover for 4x4 extended downspout	–	FGS-MCDS-EX-AB	FGSO-MCDS-EX-AB
Insertable downspout	–	FGS-MDSP-AM	FGSO-MDSP-A/I
Trumpet flare used on both 4x4 and 4x6 downspouts; <i>no 4" junction kit required</i>	–	FGS-MTRM-A	FGSO-MTRM-A
Downspout exit junction kit	–	FGS-MJWR-A	FGSO-MJWR-A
4x4/4x6 downspout; <i>insert converts bottom of downspout to 2x2" without using 2" to 4" adapter, saving vertical space</i>	–	FGS-HDSI-AB	FGS-HDSI-AB
4x4 attachments			
Square to 2" round adapter with flex tube; <i>one 4x4 junction kit (FGS-MJWR-A) required to attach to a downspout drop</i>			
5' length	1	FGS-ASRI-5F	FGSO-ASRI-5F
10' length	1	FGS-ASRI-10F	FGSO-ASRI-10F
15' length	1	FGS-ASRI-15F	FGSO-ASRI-15F
Dual 2" flex tube attachment; <i>no 4x4 junction kit required</i>			
(2) 5' length	–	FGS-KT03-A	FGSO-KT03-A
(2) 10' length	–	FGS-KT03-A10F	FGSO-KT03-A10F
(2) 15' length	–	FGS-KT03-A15F	FGSO-KT03-A15F
Single 2" flex tube attachment; <i>no 4x4 junction kit required</i>			
5' length	–	FGS-KT03-A1	FGSO-KT03-A1
10' length	–	FGS-KT03-A1-10F	FGSO-KT03-A1-10F
15' length	–	FGS-KT03-A1-15F	FGSO-KT03-A1-15F
Quad 2" flex tube attachment; <i>no 4x4 junction kit required</i>			
(4) 5' length	–	FGS-KT03-A4-5F	FGSO-KT03-A4-5F
(4) 10' length	–	FGS-KT03-A4-10F	FGSO-KT03-A4-10F
(4) 15' length	–	FGS-KT03-A4-15F	FGSO-KT03-A4-15F
4x4 quad 7/8" flex tube attachment; <i>no 4x4 junction kit required</i>			
(4) 5' length	–	FGS-KT07-A4-5F	FGSO-KT07-A4-5F
(4) 10' length	–	FGS-KT07-A4-10F	FGSO-KT07-A4-10F
(4) 15' length	–	FGS-KT07-A4-15F	FGSO-KT07-A4-15F

*A third junction is needed if drop is to a fitting or straight section. This drop junction must be a junction type FGS-MJWR-A.



4x4 System

Downspouts and Attachments – 4" H x 4" W



Downspout
(FGS-MDSP-A)



Cover for 4x4 Downspout
(FGS-MCDS-AB)



Extended Downspout
(FGS-MDSP-EX-A)
shown with and without cover



Insertable Downspout
(FGS-MDSP-A/I)



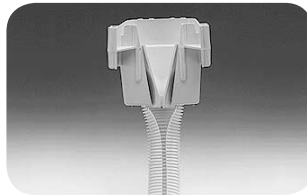
Trumpet Flare
(FGS-MTRM-A)



**Downspout Exit
Junction Kit**
(FGS-MJWR-A)



4x4/4x6 Downspout Insert
(FGS-HDSI-AB)



**4" Square to 2" Round
Adapter with Flex Tube**
(FGS-ASRI
requires FGS-MJWR-A
Junction Kit)



**Dual 2"
Flex Tube Attachment**
(FGS-KT03-A)



**Single 2"
Flex Tube Attachment**
(FGS-KT03-A1)



**2" Quad Flex
Tube Attachment**
(FGS-KT03-A4)

12/07 • 104892AE FiberGuide® Systems

4x4 System