



# 4x4 System

Fittings – 4" H x 4" W

## Ordering Information

Description	Number of Junctions	Catalog Number				
		Yellow System	Yellow System Snap-on Cover	Orange System	Orange System Snap-on Cover	Fixed Metal Cover
<b>4x4 fittings</b>						
Horizontal T	3	FGS-MHRT-A	FGS-SHRT-A	FGSO-MHRT-A	FGSO-SHRT-A	FGS-CHRT-A
Horizontal cross	4	FGS-MHXP-A	FGS-SHXP-A	FGSO-MHXP-A	FGSO-SHXP-A	FGS-CHXP-A
90° horizontal elbow	2	FGS-MH9E-A	FGS-SH9E-A	FGSO-MH9E-A	FGSO-SH9E-A	FGS-CH9E-A
90° up elbow metal cover included	2	FGS-MU9E-A	FGS-SU9E-A	FGSO-MU9E-A	FGSO-SU9E-A	FGS-CU9E-A
90° down elbow	2	FGS-MD9E-A	FGS-SD9E-A	FGSO-MD9E-A	FGSO-SD9E-A	FGS-CD9E-A
45° horizontal elbow	2	FGS-MH4E-A	FGS-SH4E-A	FGSO-MH4E-A	FGSO-SH4E-A	FGS-CH4E-A
45° up elbow metal cover included	2	FGS-MU4E-A	FGS-SU4E-A	FGSO-MU4E-A	FGSO-SU4E-A	FGS-CU4E-A
45° down elbow	2	FGS-MD4E-A	FGS-SD4E-A	FGSO-MD4E-A	FGSO-SD4E-A	FGS-CD4E-A
<b>4x4 conversions</b>						
4x4 to 4x6 straight adapter	(1) 4x4, (1) 4x6	FGS-MDSA-AB	FGS-SDSA-AB	FGSO-MDSA-AB	FGSO-SDSA-AB	FGS-CDSA-AB
4x4 expandable straight section	2	FGS-MVAR-A	–	FGSO-MVAR-A	–	–
4" Cut-in T assembly hardware included	–	FGS-MHIS-A	–	FGSO-MHIS-A	–	–
6" Cut-in T assembly hardware included	–	FGS-MHIS-B	–	FGSO-MHIS-B	–	–
12" Cut-in T assembly hardware included	–	FGS-MHIS-F	–	FGSO-MHIS-F	–	–
Cut-in T fixture	–	FGS-MHIS-JIG-A/B/F	–	FGS-MHIS-JIG-A/B/F	–	–
<b>4x4 end cap</b>	–	FGS-HMEC-A	–	FGS-HMEC-A	–	–

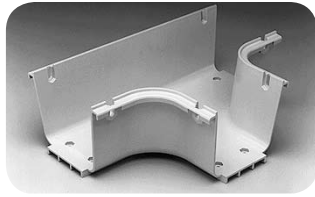
4x4 System

FiberGuide® Systems  
12/07 • 104892AE



# 4x4 System

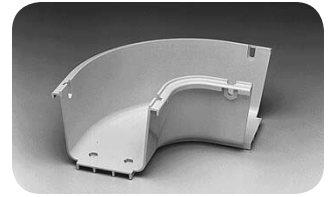
Fittings – 4" H x 4" W



**Horizontal T**  
(FGS-MHRT-A)



**Horizontal Cross**  
(FGS-MHXP-A)



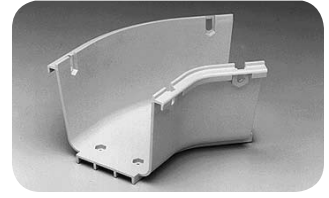
**90° Horizontal Elbow**  
(FGS-MH9E-A)



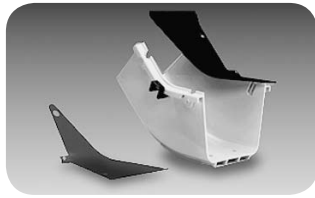
**90° Up Elbow**  
Metal Cover Included  
(FGS-MU9E-A)



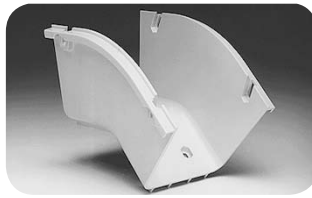
**90° Down Elbow**  
(FGS-MD9E-A)



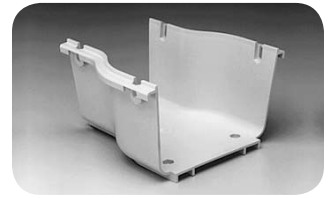
**45° Horizontal Elbow**  
(FGS-MH4E-A)



**45° Up Elbow**  
Metal Cover Included  
(FGS-MU4E-A)



**45° Down Elbow**  
(FGS-MD4E-A)



**4x4 to 4x6 Straight Adapter**  
(FGS-MDSA-AB)



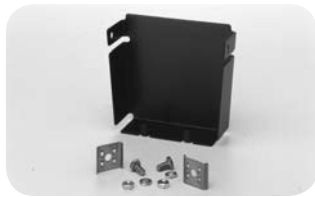
**Expandable Straight Section**  
(FGS-MVAR-A)



**Cut-in T**  
(FGS-MHIS-A)



**Cut-in T Fixture**  
shown on straight section  
(FGS-MHIS-JIG-A/B/F)



**End Cap**  
(FGS-HMEC-A)



**Snap-on Plastic Cover**  
(FGS-SH4E-A shown attached to 45°  
horizontal elbow with junctions)

FiberGuide® Systems  
12/07 • 104892AE

4x4 System